



景賢里 中華武學院

King Yin Lei
Institute of Chinese Martial Studies

Earthpulse Foundation Limited

Presentation September 08, 2014

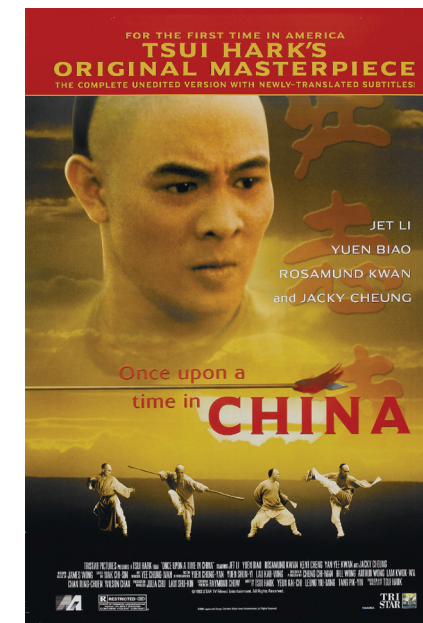




景賢里 香港著名地標

King Yin Lei
Icon of Hong Kong





功夫 香港文化符號

Kung Fu 'Hong Kong's Symbol'





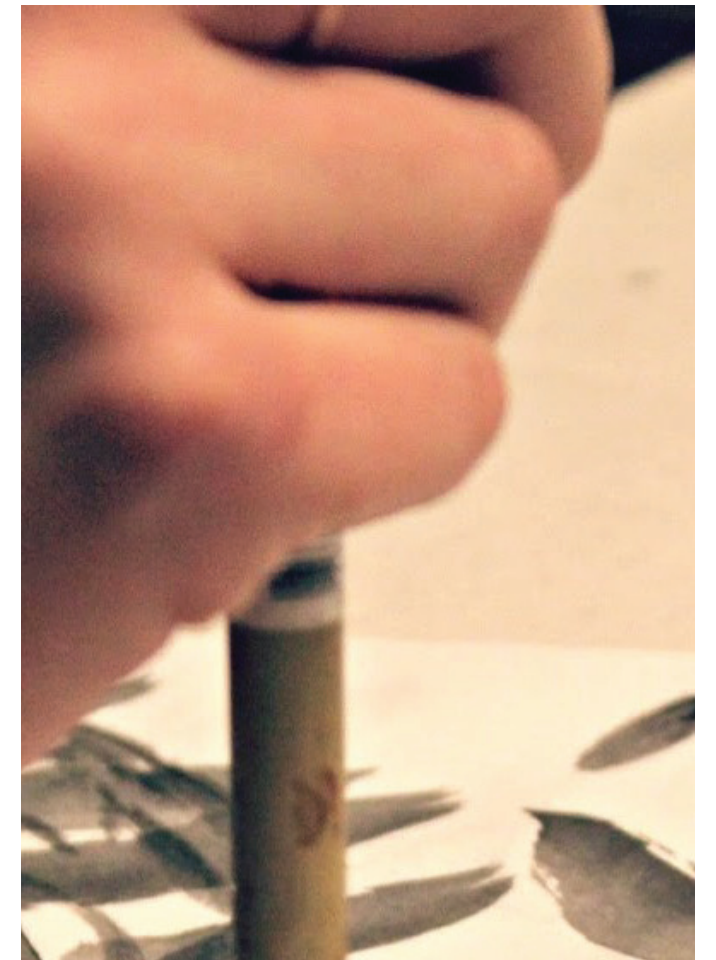
文化遺產
Heritage



教育
Education



社區
Community



藝術
Art



景賢里中華武學院

—
世界功夫聖殿

King Yin Lei
Institute of Chinese
Martial Arts Studies

—
Kung Fu Mecca





Earthpulse – a charity dedicated to the survival of marginalised peoples in rural China

社區 Community

We provide social support to the poorest communities in the hill regions of northern China.



教育 Education

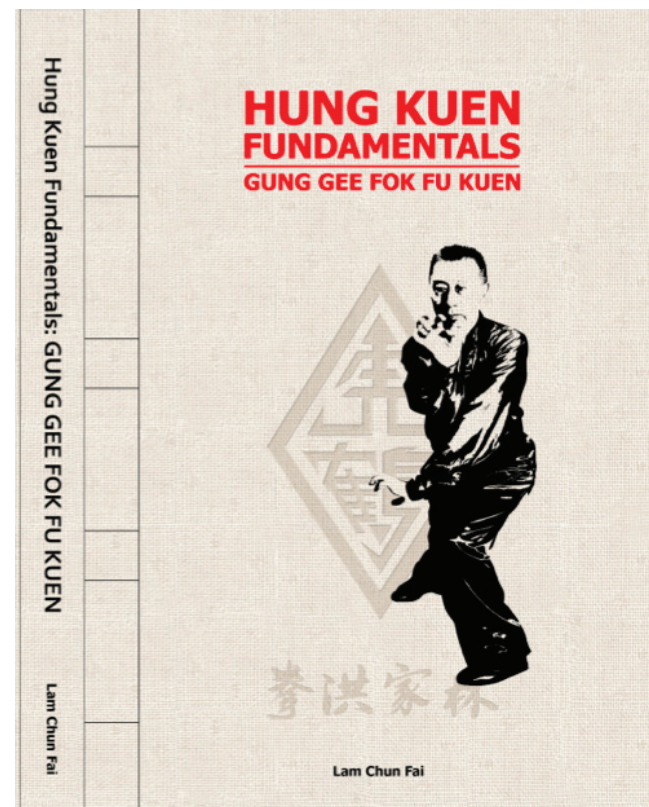
Annually we sponsor dozens of students from minority areas to go to university



文化遺產 Heritage

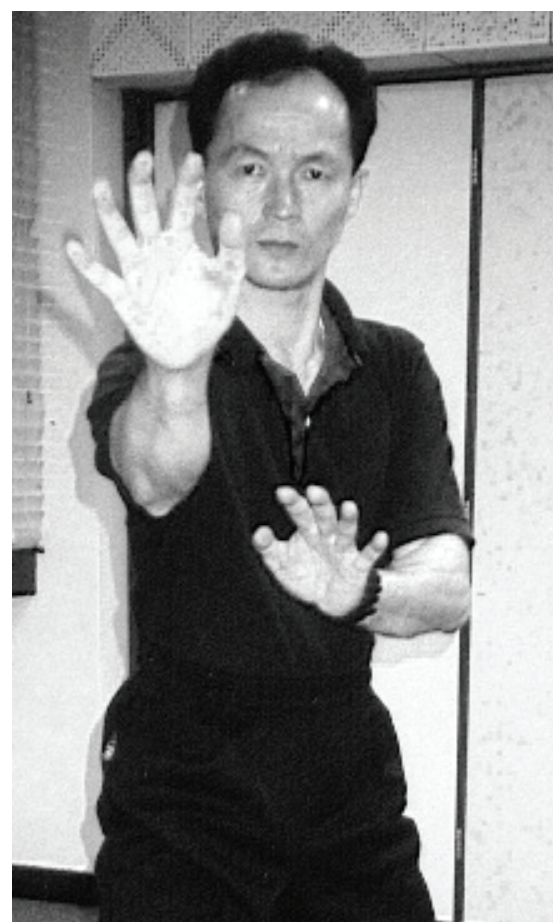
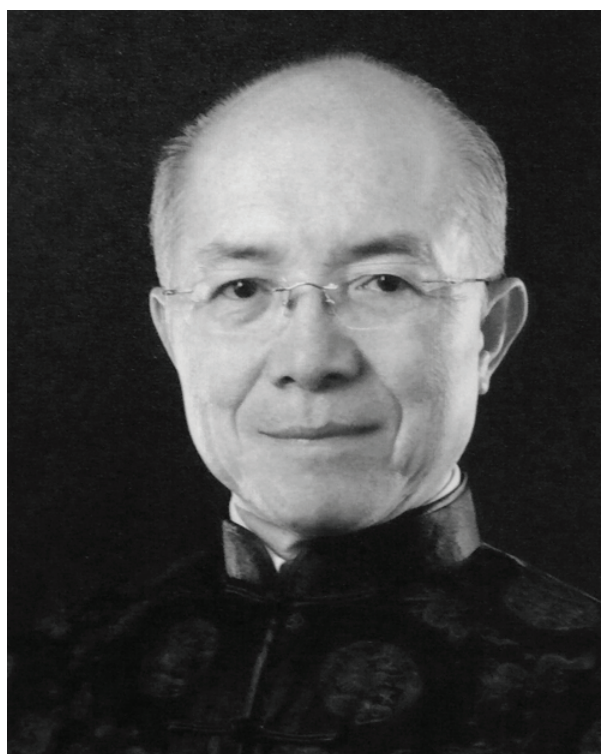
We are the leaders in preserving the intangible heritage among ethnic minorities in northern China





The only research and educational organisation in Chinese Martial Arts in Hong Kong

Heritage Focused



International Guoshu Association

the only research and educational organisation for Chinese martial arts

Advisors:

Shi Yongxin, abbot of Shaolin Monastery
Stephen Selby, one of the most respected figures in traditional archery and founder of Asian Traditional Archery Research Network

Xu Kaicai, former national record in archery, president of China National Traditional Archery Association

Yang Zhengduo, ninth dan in Chinese wushu, great grandson of Yang Family Taijiquan founder, Yang Luchan, and one of the most respected figures in traditional martial arts

Zheng Baolin, Founder and President of Traditional Wushu Federation, Northern Shaolin Dei Tong Ba Gwaa Mun

Man Wing Kai, Dai Sing Pek Gwa Mun

Sin Lam Yuk, Dai Sing Pek Gwa Mun

Tsui Siuming, film director, Taichi Praying Mantis

Ma Wai Wun, Yang Family Taijiquan

C.S. Tang, Bagua

Lam Chun Fai, Hung Kuen

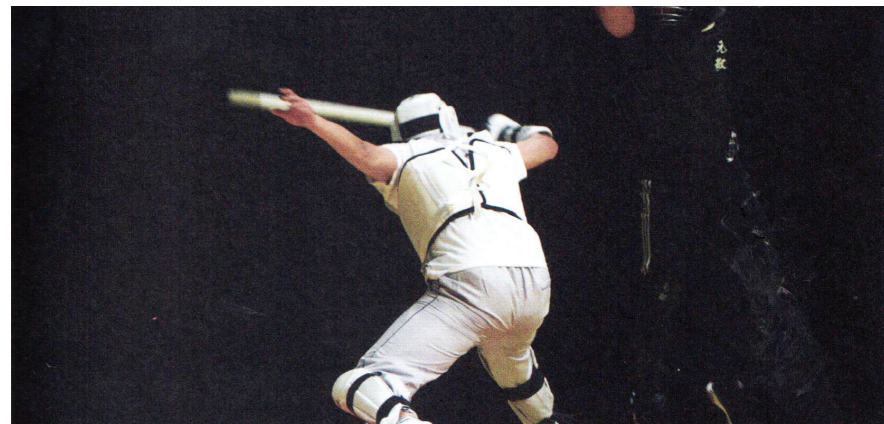
Kwok Wun Ping, Guangzhou Ving Tsun

Kong Chi Keung, Ving Tsun Ip Man Lineage

Lei Tin Loy, Chow Family Praying Mantis

Lau Biu, Chow Mok St yle

Lee Kong, Fujian Yongchun White Crane



Competition

-

Carnival

-

Art Exhibition

-

Academic
Symposium

Over 1500 athletes
26 countries
Cross-sector collaboration



香港國際功夫節
HONG KONG INTERNATIONAL
KUNGFU FESTIVAL

*“The only Large Scale event
to celebrate Hong Kong’s
diverse Kung Fu culture”*

合作單位 KungFu Partners



媒體支持 Media Partners



贊助單位 Official Sponsors



Chan Cheuk Ming
北京孫祿堂武學文化發展中心
Beijing Sun Lutang Martial Studies &
Cultural Centre
湖南振藩文化傳播有限公司
Hunan Province Zhengfan Culture & Media

支持單位 Supporting Organizations



KING YIN LEI INSTITUTE OF CHINESE MARTIAL STUDIES

EARTHPULSE FOUNDATION LTD.



香港文化遺產 Heritage

*Intangible
Cultural Heritage*

-
Architecture

-
Artifacts

-
Landscape

-
Practice

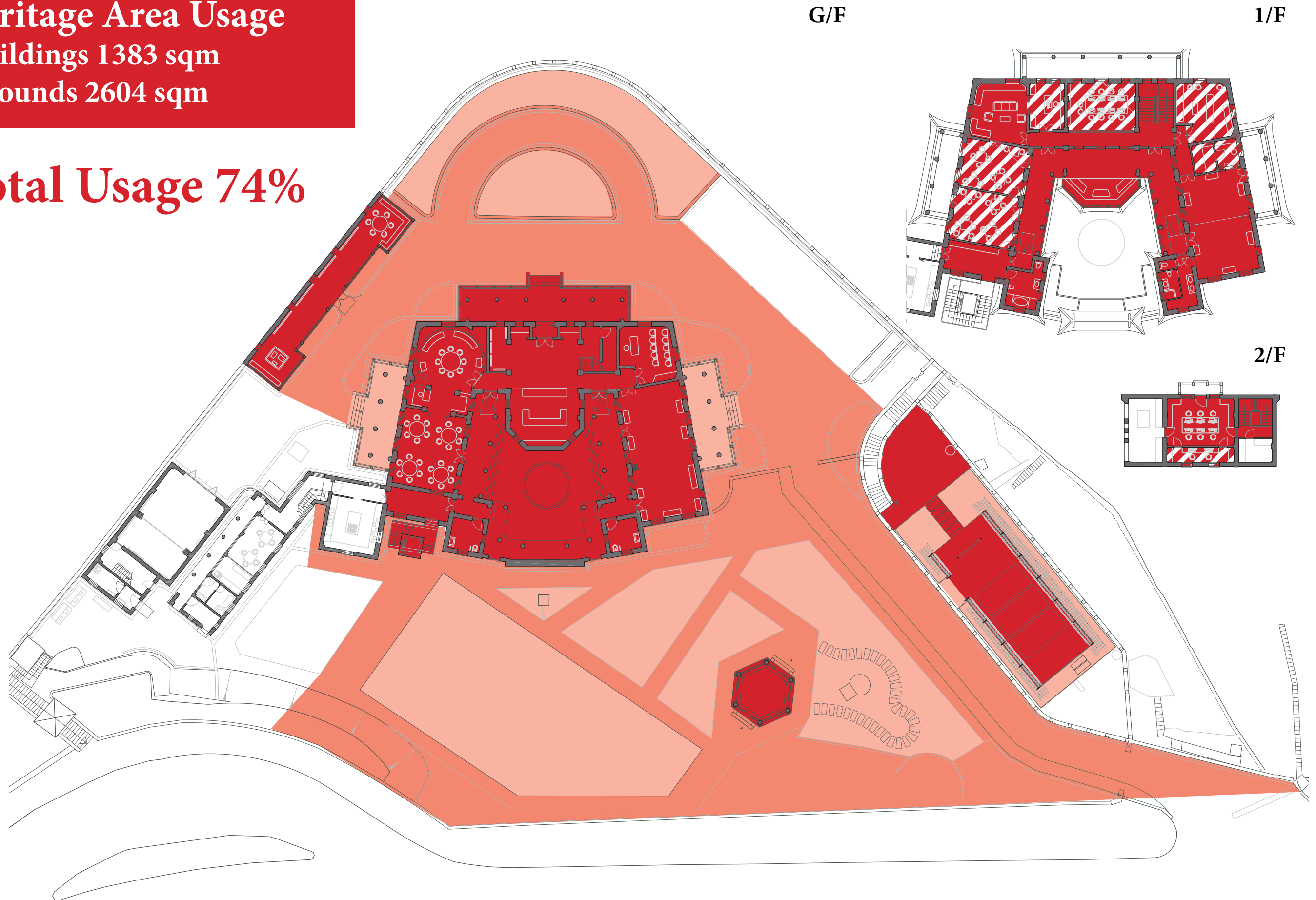


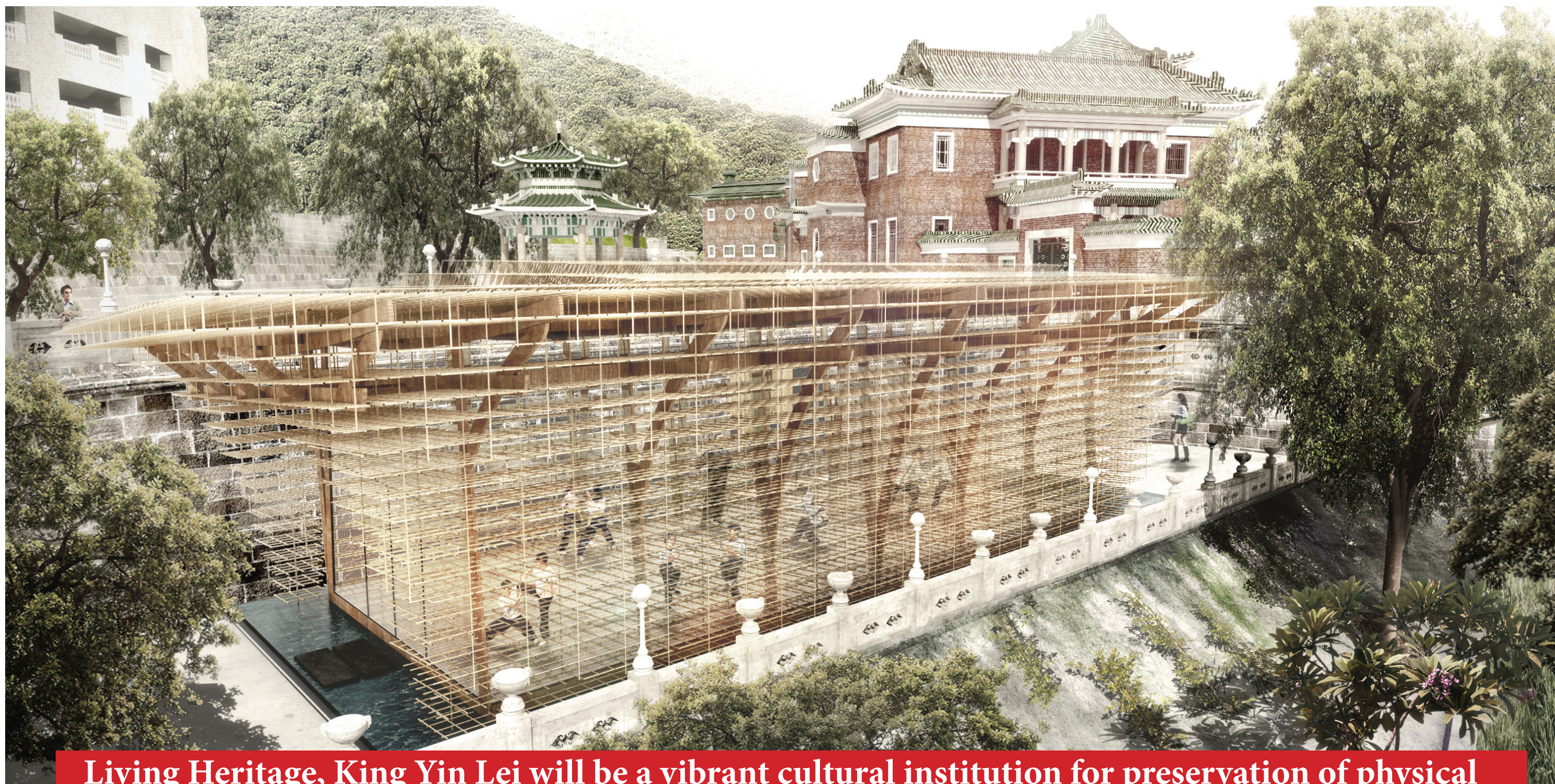
Heritage Area Usage

-Buildings 1383 sqm

-Grounds 2604 sqm

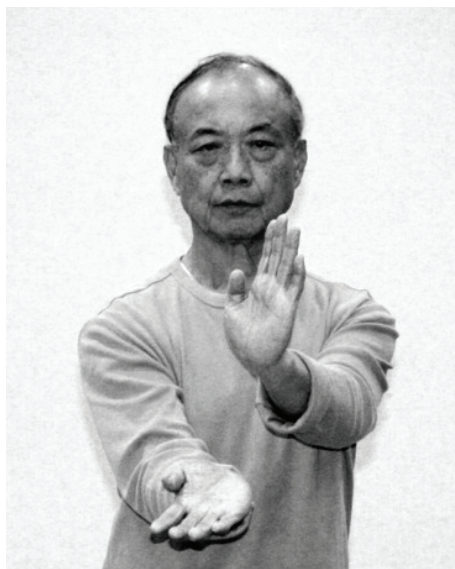
Total Usage 74%





Living Heritage, King Yin Lei will be a vibrant cultural institution for preservation of physical and cultural heritage of Hong Kong

Free entry to Public, with programs for all



Martial Arts / Movement / Dance Programmes

Heritage

Masters courses to pass on the embodied knowledge of traditional Chinese martial arts

Hung Kuen, Fujian Yongchun White Crane, Yang Family Taijiquan, Wu Family Taijiquan, Tantui, Bajiquan, Pigua, Wing Chun, Ving Tsun

Grandmasters

Programmes created and taught by grandmasters & celebrities

Lam Chun Fai, Lee Kong, Lau Biu, Kong Chi Keung, Cheng Po Lam, Ma Wai Wun, C.S. Tang, Tan Yuan Yuan

Health & Lifestyle

Catering to the needs of the general public and neighbourhood, with programmes specially designed for people today

Family

Programmes created for children and families

Elite Martial Arts & Dance

Training programmes for top practitioners and athletes



2014/09/15
至
2014/12/08
(逢星期一晚7:30至9:30)

授課地點：

香港孔子學院課堂
(香港九龍紅磡香港理工大學
鐘士元樓A座204室)

主講：

馬廉禎教授
(華南師範大學體育科學學院民族傳統體育學教研室主任)
趙式慶先生
(中華國術總會總裁)

專題講座嘉賓：

馬明達教授、謝肅芳先生、麥勁生教授、
徐小明先生、李剛先生、江志强先生

課程學費

港幣 5,200

課程證書

凡依照課程要求完成學業的學員可獲主辦機構
頒發畢業證書。

課程目的

本課程旨在弘揚中國文化，發揚武學國粹，使學員對中國民族
體育體系的構成與發展有清楚瞭解，對其中以武術為代表的
中華武學體系有更為深入的認知，通過對武術套路演練，以及
散手、短兵等武術對抗性項目的體驗性學習，使學員從“身”
“心”兩個方面更為直接的體悟中國傳統身體文化。

講授內容

武學導論，中國民族體育的形成與發展，從發創探討中華武
化的起源，中華射藝，軍旅武藝與民間武術文化，武術的現代
化發展(一)：套路、等、武術的現代化發展，(二)：擒拿、短
兵等，專引術與太極拳、武體與少林功夫、南派武藝、香港武術
發展與傳承。

授課特色

課堂講授以口頭講述、PPT 演示為主，輔以現場演示
察、實物觸摸等方式，增加授課認知的客觀性與真實
布置相應閱讀作業與思考題目，以增強認知，另設多
座，以直接靈活的問題形式，讓學員獲得對相應主題的
流，以求學以致用，有利理論聯繫實踐。

報名方法

1. 本課程不收取報名費
2. 有意修讀者，請先以電郵方式發送“中華武學概論，預留學
位”字樣以及您的姓名和聯繫電話至香港孔子學院電子信箱
(info@cihk.org.hk)預留學位，先額先得，額滿即止。
3. 具體報名方法詳見報名表格(附件：報名表)

查詢方式

如有任何查詢，請來電至香港孔子學院查詢。
張小姐(普通話) 3400 3266
陳小姐(廣東話) 3400 3112
陳先生(廣東話) 3400 3262

聯繫方式

地址：香港理工大學鐘士元樓 A 座 A204 室
電郵：info@cihk.org.hk
網址：www.cihk.org.hk
電話：3400 3266/ 3400 3262

主辦機構：



中華武學概論

武學 Education

Introduction to Chinese
Martial Art Studies

Hong Kong
Martial Arts Culture

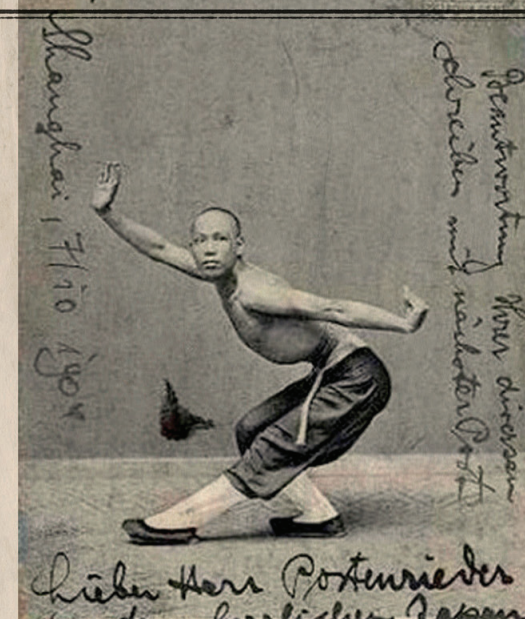
Philosophy of
Chinese Martial Arts

Chinese Archery Studies

History & Practice of
Chinese Fencing

創改
新造

廣東東拳師

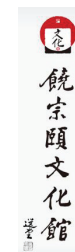


香港
武林

第三部

文化篇

文化因時因地而變，在歷史大河裏
化現象皆應時代更替和社會改變而
自封的文化到頭來只有一種結果，
和社會淘汰。只有與時俱進，不斷
「傳統」，才能保持旺盛的生命力，
和「動」繼續生存下去。





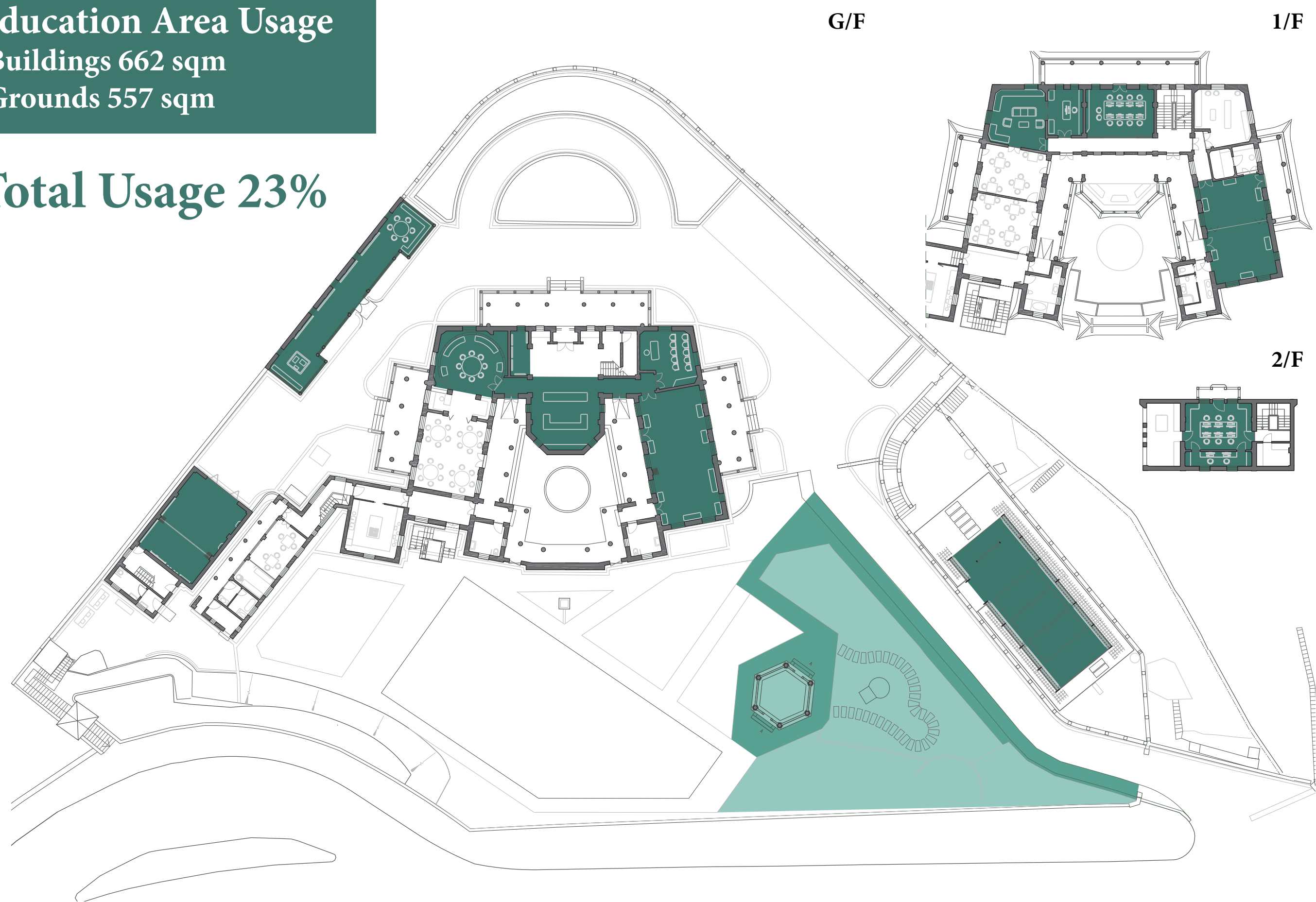
Chinese dance, Chinese calligraphy, Chinese ink painting, Chinese stamp-making, Guqin, Tea-drinking, Sword-appreciation

Classes Offered 3 times a day / 5 days a week



Education Area Usage
-Buildings 662 sqm
-Grounds 557 sqm

Total Usage 23%



G/F

1/F

2/F



Culture & Education Committee

Prof. Yu Shuo
Hing Chao

Prof. Chu Hung Lam, HK Confucius Institute

Fred Wang, Director of HK International Film Festival Society

Lau Siu Ming, Director of HK Dance Association

Henrietta Tsui-Leung, President of HK Galleries Association

Oiling Cheung, Chinese Cultural Studies Centre

Stanley Wong, Renowned Hong Kong Artist

Victor Wu, Founder of DNA

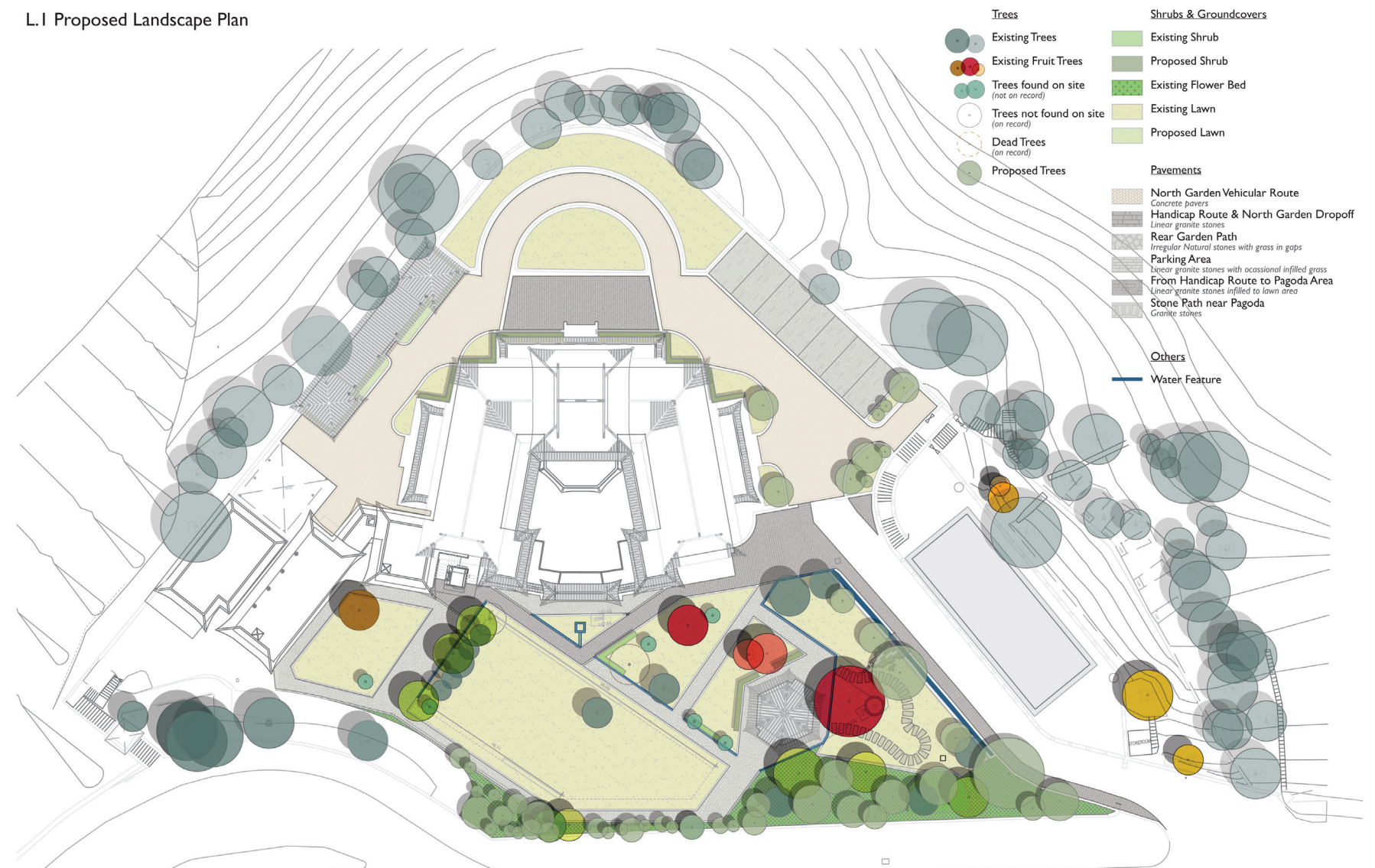


Engaging Local Community & Schools

*Grounds Open for Community 7 days a week
2 Community events per month
Maximum 3,170 people per day*



L.1 Proposed Landscape Plan



International Guoshu Association King Yin Lei Revitalization Proposal
Preliminary Landscape Concept 2014_04_29_draft
0 1 2 5 10 20m 1:300@A3
Landscape Architecture / Architecture / Design
contact: vincci.mak.studio@gmail.com

VMS

大坑坊眾福利會
Tai Hang Residents' Welfare Association



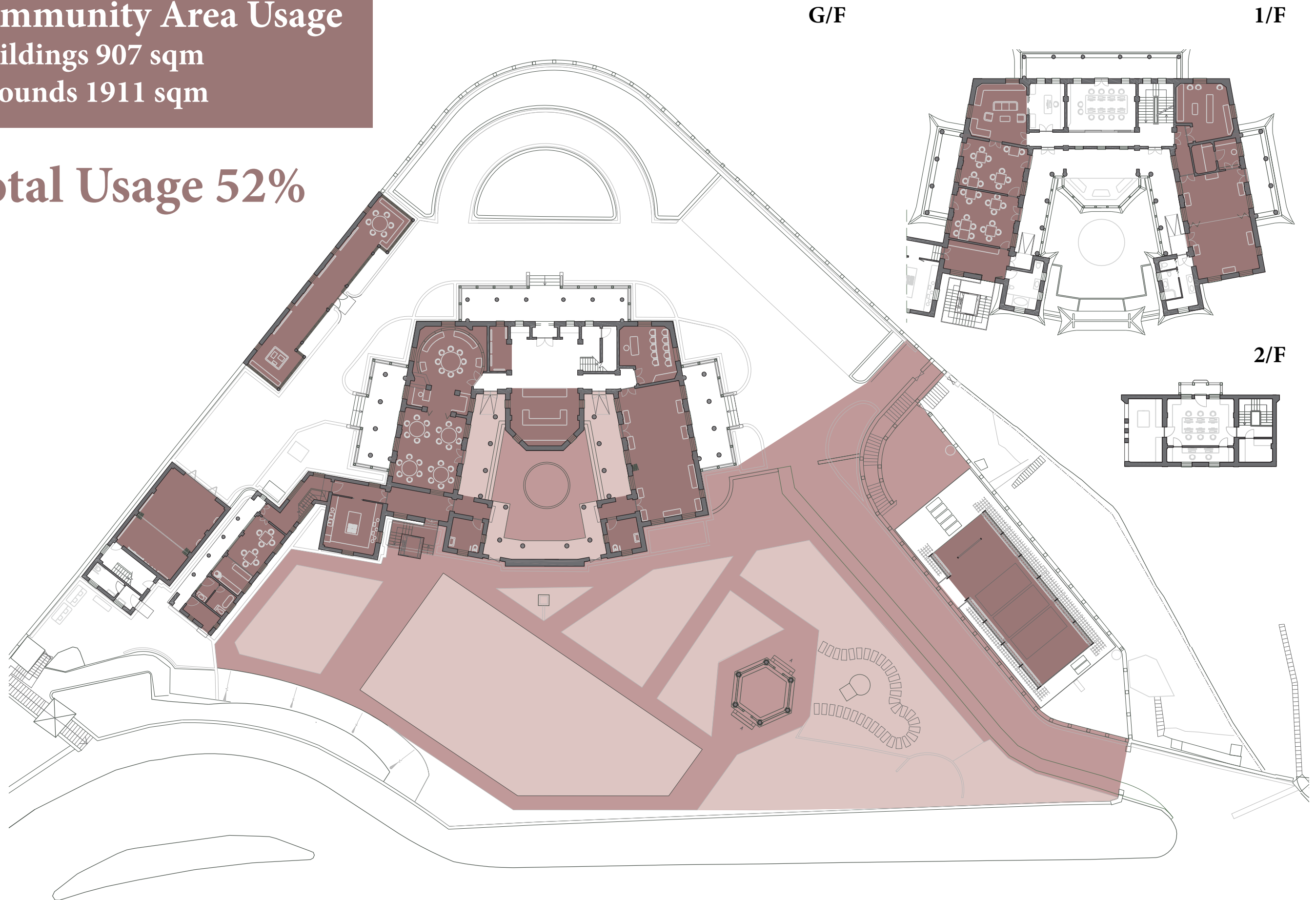
香港渣甸山居民協會
JARDINE'S LOOKOUT RESIDENTS' ASSOCIATION

Community Area Usage

-Buildings 907 sqm

-Grounds 1911 sqm

Total Usage 52%





景賢里之友 武術脫貧計劃

Friends of King Ying Lei

'Empowering Marginalised Youth Through Martial Arts'

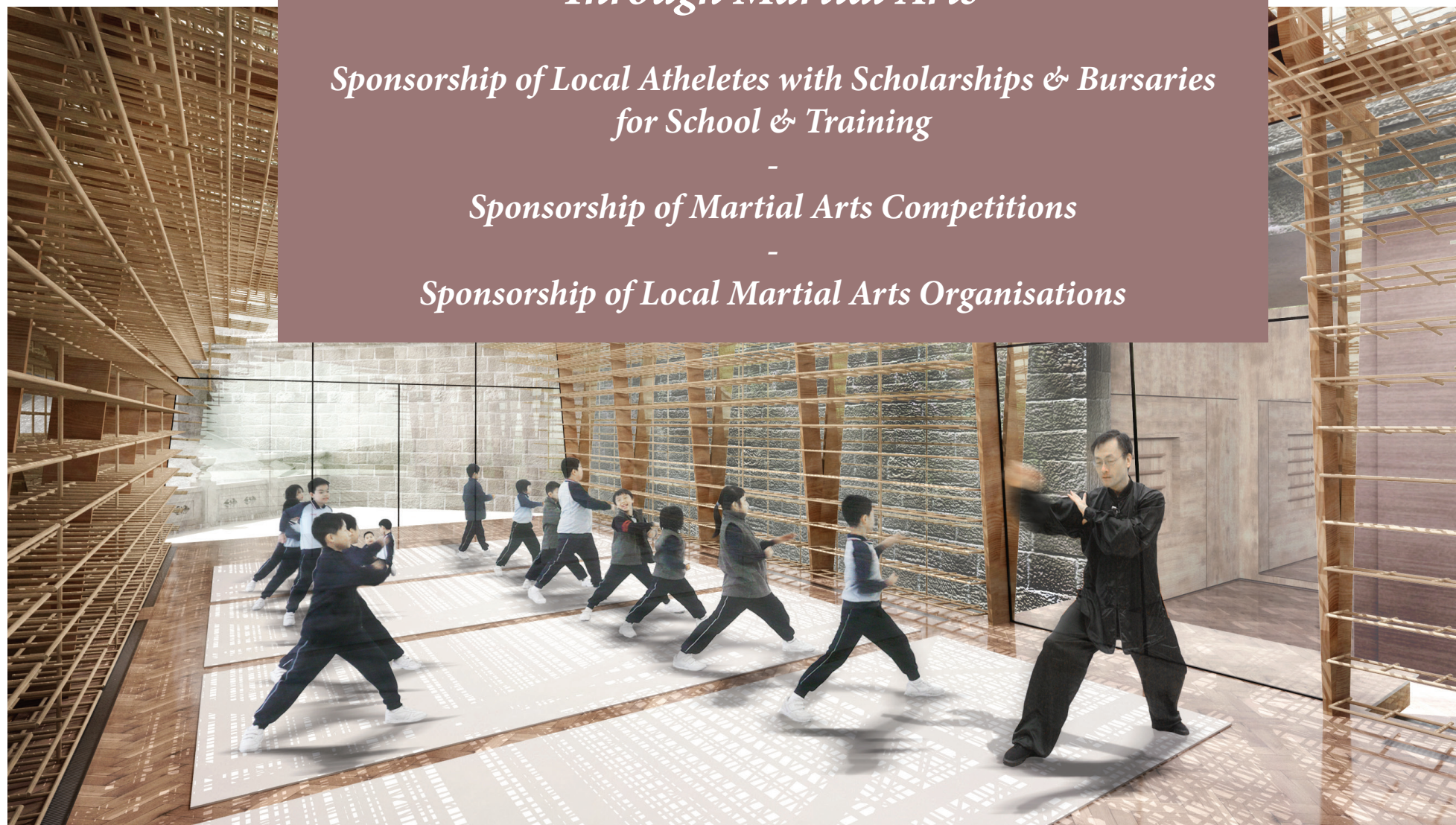
*Sponsorship of Local Athletes with Scholarships & Bursaries
for School & Training*

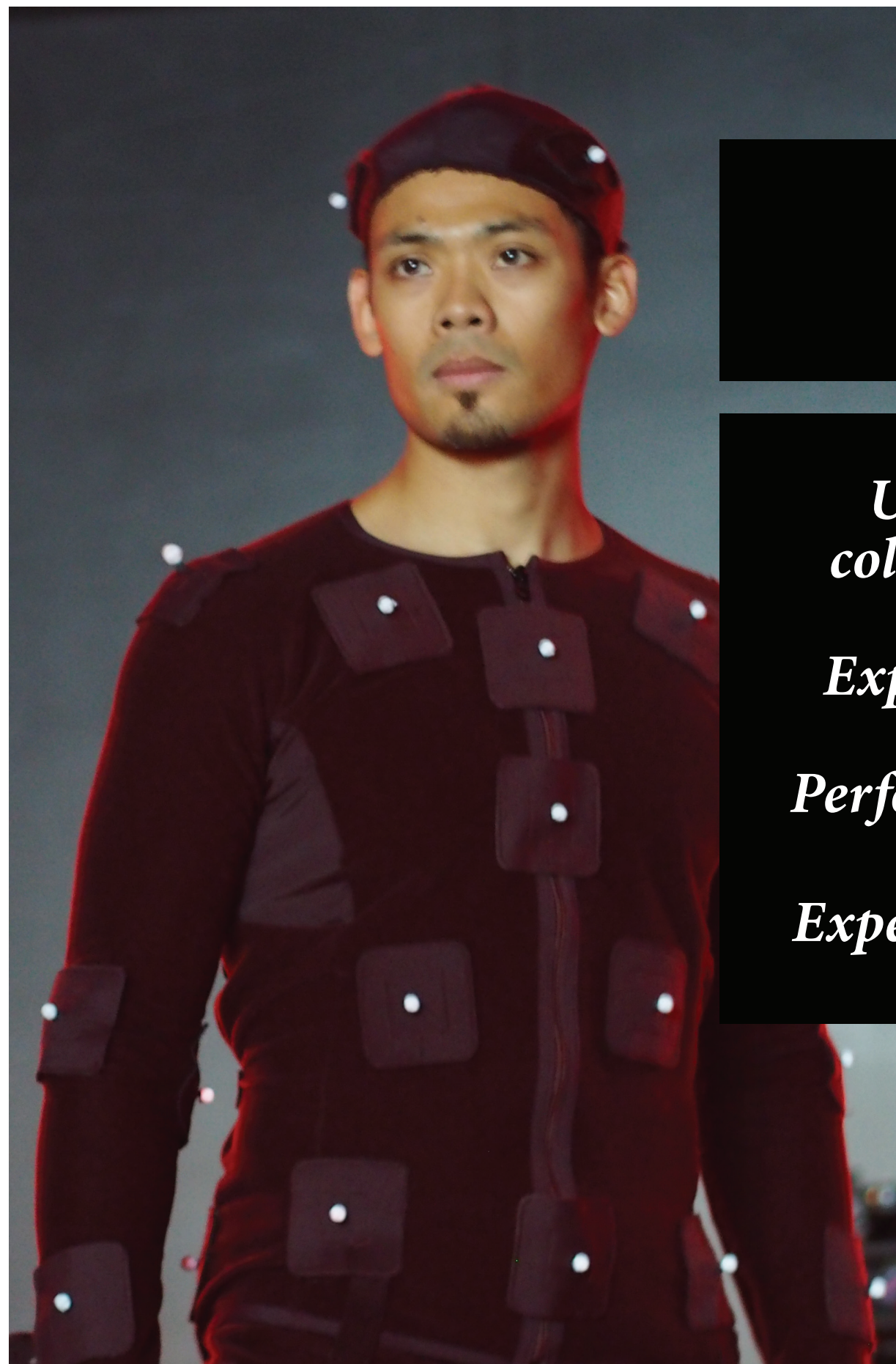
-

Sponsorship of Martial Arts Competitions

-

Sponsorship of Local Martial Arts Organisations





藝 Art

*Unique
collections
-
Experience
-
Performances
-
Experimental*

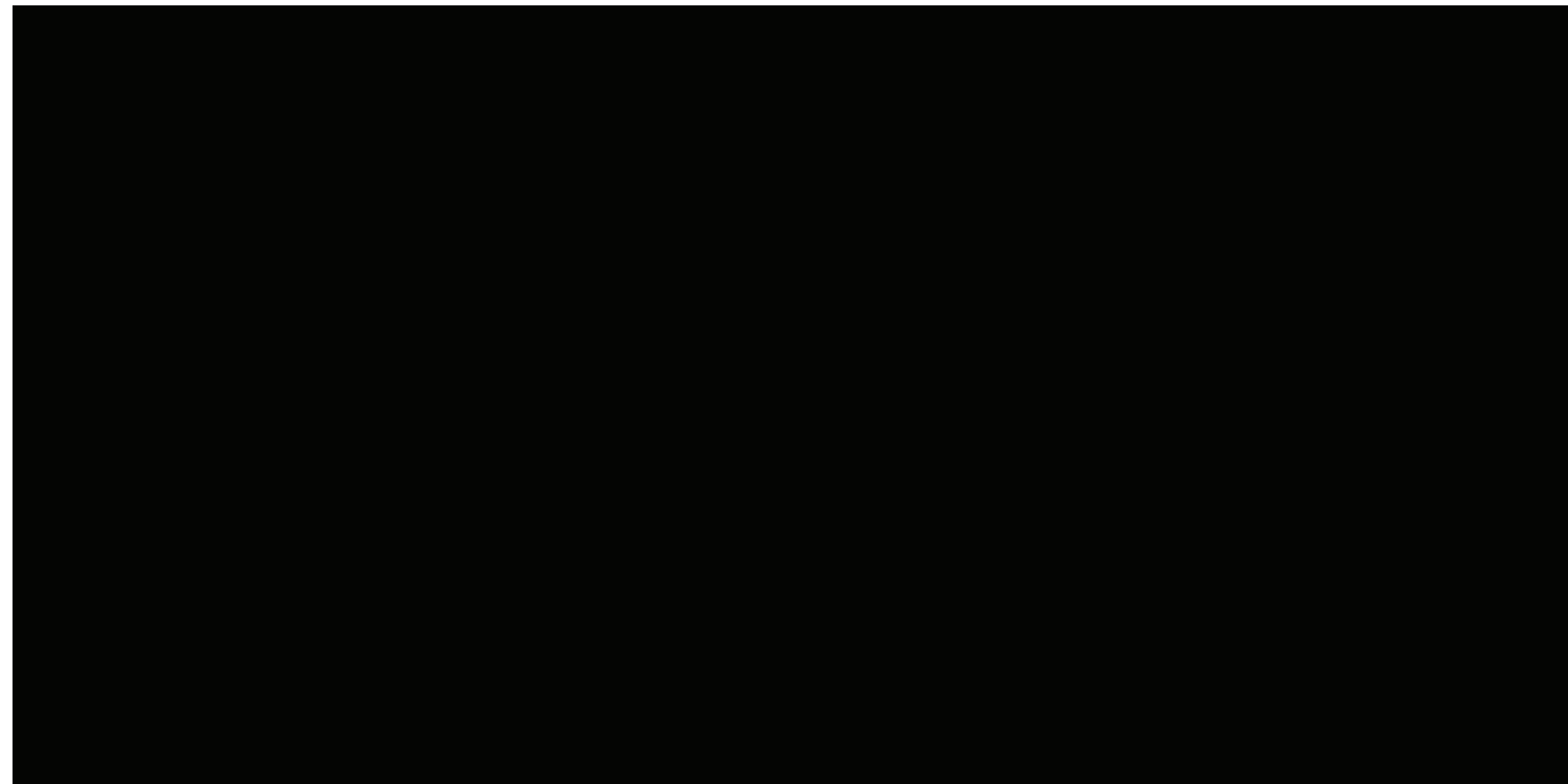




香港武林故事 — 非物質文化保護

The Story of Hong Kong Kung Fu

Preservation of Intangible Cultural Heritage





Traditional and Contemporary Art, Artifacts, Armor, Costumes

Exhibitions Physical Cultural Heritage

Art/Exhibit Area Usage

-Buildings 707 sqm

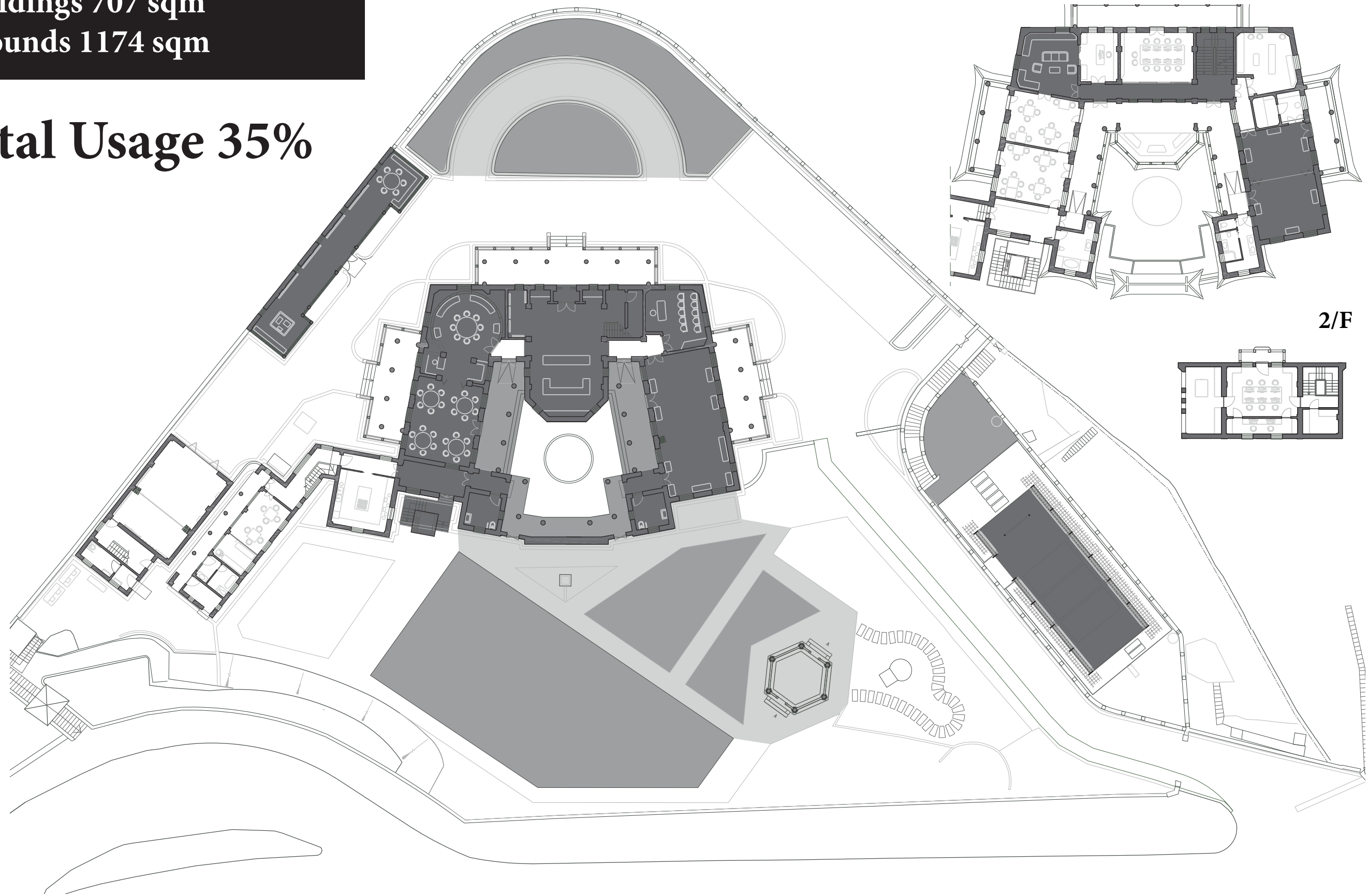
-Grounds 1174 sqm

Total Usage 35%

G/F

1/F

2/F



景賢里之歷程

The Story of King Yin Lei through Cultural Exhibitions & Demonstrations

Open to public 10am - 4 pm / 6 days a week





茶居

Teahouse

Traditional Chinese Teas &
Food

-

Traditional Chinese Medicine

-

Heritage of Original Owner's

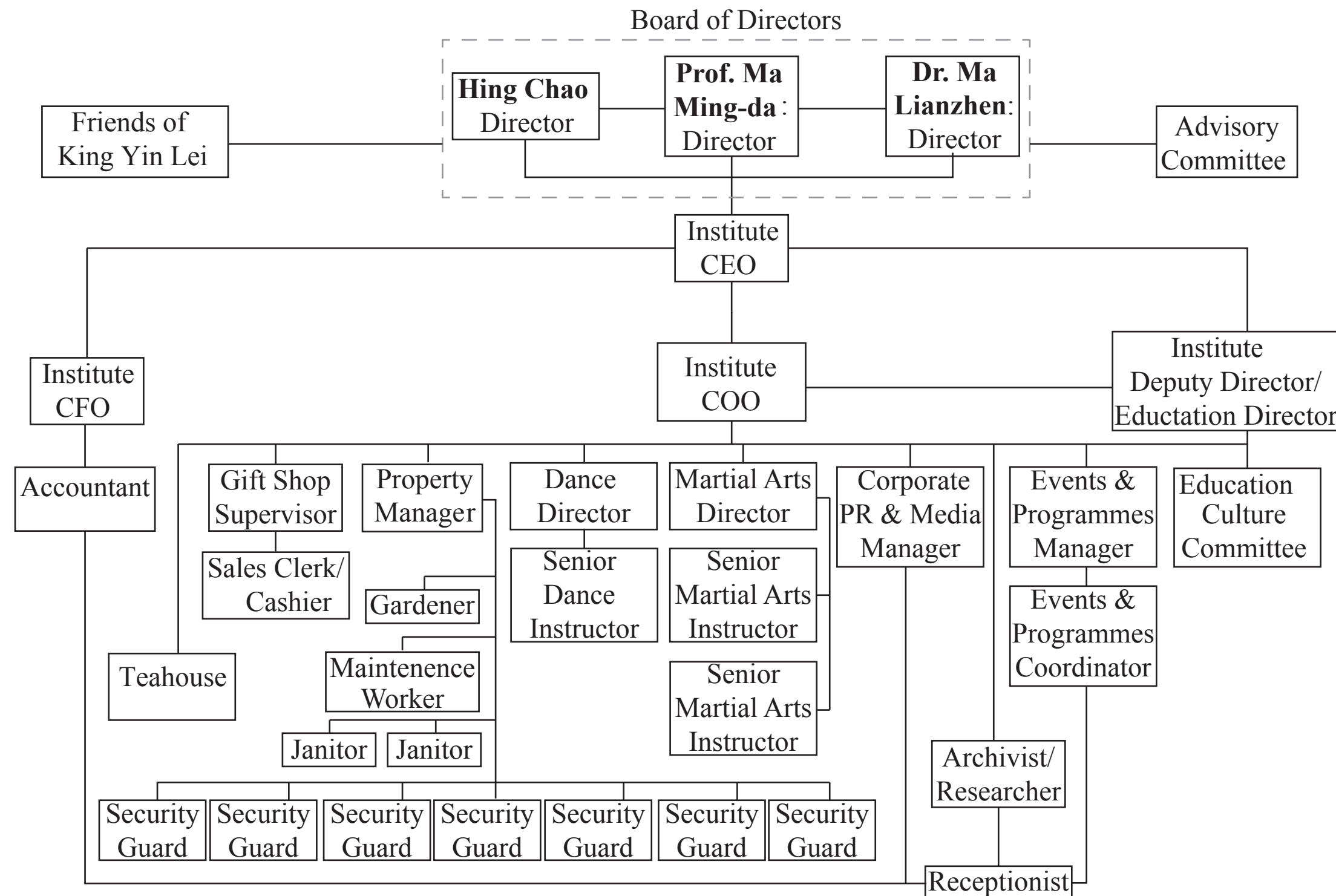
-

125/person per day
360 days a year



保護香港文化遺產

King Yin Lei Institute of Chinese Martial Arts Organisational Chart



A nighttime architectural rendering of the King Yin Lei Institute of Chinese Martial Studies. The scene features a modern high-rise building on the left, a traditional Chinese pavilion in the center, and a large, illuminated building with a traditional roof on the right. The entire complex is set against a backdrop of a forested hill under a starry night sky. The foreground is filled with dense, dark foliage.

King Yin Lei

Preserving Hong Kong's Physical and Cultural Heritage



KING YIN LEI INSTITUTE OF CHINESE MARTIAL STUDIES

EARTHPULSE FOUNDATION LTD.